

## Desk T-Nut Install

 Safety  Quality  
Time To complete:



**1** Needed:  
1/4" Dill Bit, four T-Nuts, four 10-24 x 1/2" screws, two 10-24 x 1 3/8" screws  
Also Needed not shown: Drill, hammer and screwdriver.



**2** Remove mattress.



**3** Close bed and remove screws at the pivot point on both sides using an allen wrench. Have a helper hold the desk. It could pull the face open.



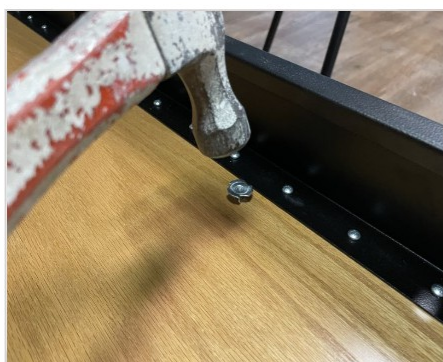
**4** Remove the center/top screw on each hinge. If there is a center hinge remove the two outer screws.



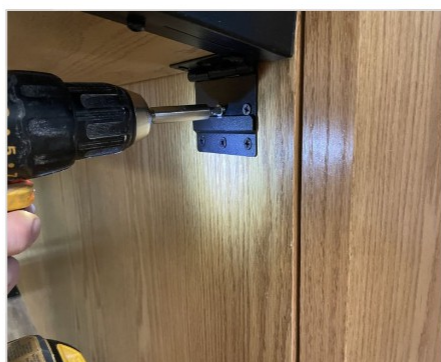
**5** With a 1/4" drill bit, drill out the holes that had the screws removed.



**6** Reconnect the pivot point.



**7** Open the bed, clear away any splintered wood and hammer in the T-Nuts in each hole.



**8** Disconnect the pivot again as in step 3, lift the desk and put in 10-24 screws. NOTE: If there is a support block in the center, use longer screws



**9** Reconnect the pivot point and replace the mattress.